



# VIRTUAL INTELLIGENCE DIRECTORATE

*OMNIA VINCIT SAPIENTIA*

## **Generic Ground Force structure**

### **INTREP VID-B-001**

**NOTE:** Virtual Intelligence Directorate (VID) is a fictive intelligence organization created to increase immersion in missions and campaigns hosted and organized by the 132nd Virtual Wing, using DCS (Digital Combat Simulator).

Version: 2.0

Published: 2021-11-06



# Introduction

This report is part of the basic intelligence for 132<sup>nd</sup> hosted events.

The aim of this report is help pilots understand the organization and structure of enemy ground forces.

The structure in this document is generic and the actual structure in an operation is given as intelligence for that specific operation.

**NOTE:** This document and structure is a simplification and a compromise between real world organization and DCS limitation, while respecting that this is a hobby and not anyones job.



# Version control

Version number	Date	Information changed
0.4 (DRAFT)	2020-04-25	Finished Air Defense Forces (ADF)
0.5 (DRAFT)	2020-05-06	Corrected errors after feedback
1.0	2020-05-07	Official release
1.1		Corrected picture of BMP 2 and 3.
2.0	2021-11-16	Changed author from VIS to VID



# Content

## Part 1: Explanation

[Explanation](#)

## Part 2: Ground Forces

[Corps](#)

[Armor Division](#)

[Mechanized Division](#)

[Motorized Division](#)

[Air Defense Division](#)

[SSM Missile Regiment](#)

[Rocket Artillery Regiment](#)

[Airborne Brigade](#)

[Logistic Regiment](#)

[Helicopter Regiment](#)

[Reconnaissance Regiment](#)

## Part 3: Air Defense Forces

[Air Defense Force Region](#)

[SA-2 Regiment](#)

[SA-5 Regiment](#)

[SA-6 Regiment](#)

[SA-10 Regiment](#)

[SA-2 BN](#)

[SA-3 BN](#)

[SA-5 BN](#)

[SA-6 BN](#)

[SA-10 BN](#)

[SA-11 BN](#)

[Air Defense Force Battalion](#)



# Explanation: Symbols



★★★★

IV Corps

Rank of commanding officer (generals)

Name of unit



**Armor Platoon**

3x MBT

Types of vehicles in unit



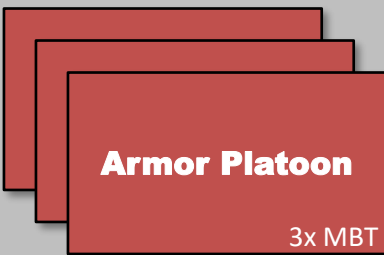
**Artillery  
Battery**

Long dashed line indicates that this unit is supporting (attached), and is not organic to the unit. The unit is attached when the force is in the field for combat



**Artillery  
Battalion**

Short dashed line indicate that this unit **may** be split up and detached and will support a unit at a lower echelon , and is not organic to this unit. A unit may be split up and detached to subunits when the force goes to the field for combat



**Armor Platoon**

3x MBT

Indicates similar units (In this example 3 Armor Platoons)

### Maneuver units:

Armor, Mechanized and Motorized forces.

### Brigade

Brigade is the normal fighting unit (contains air Defense, maneuver units, logistics and artillery).

### Division:

Offensive or defensive, this is the normal unit size for a sector.

### Corps:

Contains multiple division and additional Corps resources and a headquarter.



# Explanation #2

## Ground Forces

Ground forces are the military combat forces. This includes air defense forces assigned to the ground forces.

The main fighting force (the force that engages in battle to defeat the enemys ground forces) are called maneuver forces. Maneuver forces are divided into:

- Motorized:** Wheeled Infantry (APC)
- Mechanized:** Tracked Infantry Fighting Vehicles (IFV)
- Armor:** Main Battle Tanks (MBT)

The maneuver forces are supported by :

- **Combat Support (CS) forces:** Artillery, Air Defenses, Recon
- Combat Service and Support (CSS) forces:** Logistics

## Air Defense Forces

Air Defense forces are Air Defenses controlled by the Air Force.

Air Defense Forces are divided in two parts:

- **Air Defense Force (ADF):** Protecting areas, important targets, controlled by Air Force. These forces are a combination of static sites and mobile sites, all of them are connected in a Integrated Air Defense System (IADS)
- Air Defense (AD):** Protecting maneuver forces, fielded forces, controlled by Army once deployed into the field. These forces are highly maneuverable, but rarely connected to the enemy's IADS.

-Air Defense Regiment (AD Regiment): Supporting the Army

-Air Defense Force Regiment (ADF Regiment): Supporting the Air Force



# Unit size

Platoon	3x Fighting vehicles ( MBT, IFV, APC)
Company/ Battery	3x Platoons
Battalion	2-5 Companies (3 line companies + support/HQ)
Brigade / Regiment	3-5 Battalions (3 line Battalions + support/HQ)
Division	3 Line Brigades + Regiments/Battalions for support
Corps	3 Line Divisions + Brigades, Regiments and Battalions in support

**NOTE:** "line" refer to maneuver forces such as armor, mechanized or motorized infantry.

Brigade and Regiment are used on the same unit size. Brigade are normally used for maneuver forces, and Regiment are used for CS or CSS forces.

Company and battery are similar organizational size. Battery are used for artillery units and air Defense units. Company for any other units.



# Symbols (Type and size)

## UNIT TYPES

(Combatflite + briefings)



Infantry



Motorized infantry: Wheeled Armored Personell Carriers (APC)



Armor: Main Battle Tanks



Mechanized Infantry: Tracked Infantry Fighting Vehicles (IFV)



Artillery: Mortars



Mechanized Artillery: Tracked artillery



Reconnaissance: Various reconnaissance units

## UNIT SIZES

(Combatflite + briefings)

...



Platoon

x



Brigade

III



Regiment

I



Company/Battery

xx



Division

II



Battalion

xxx



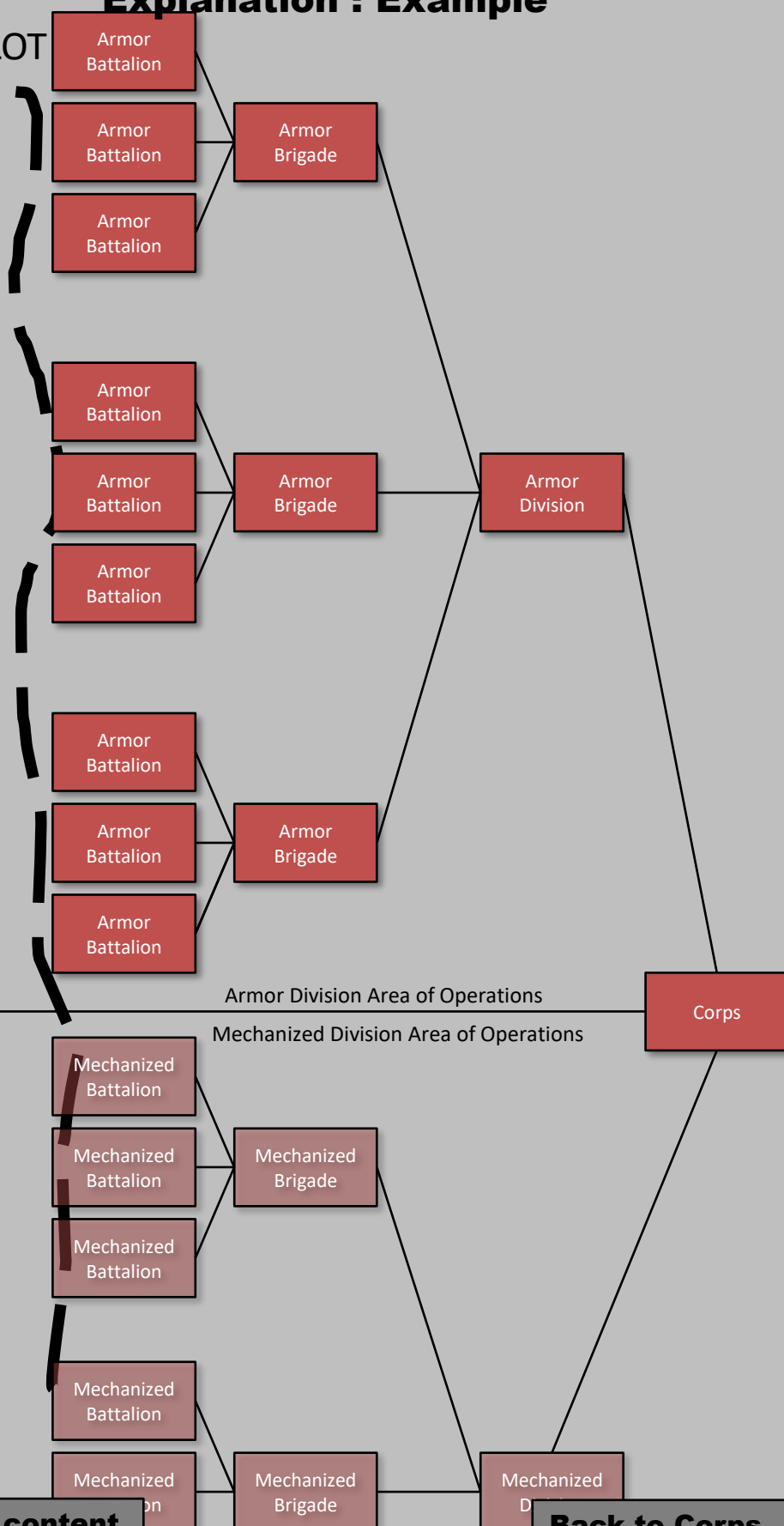
Corps





# Explanation : Example

FLOT



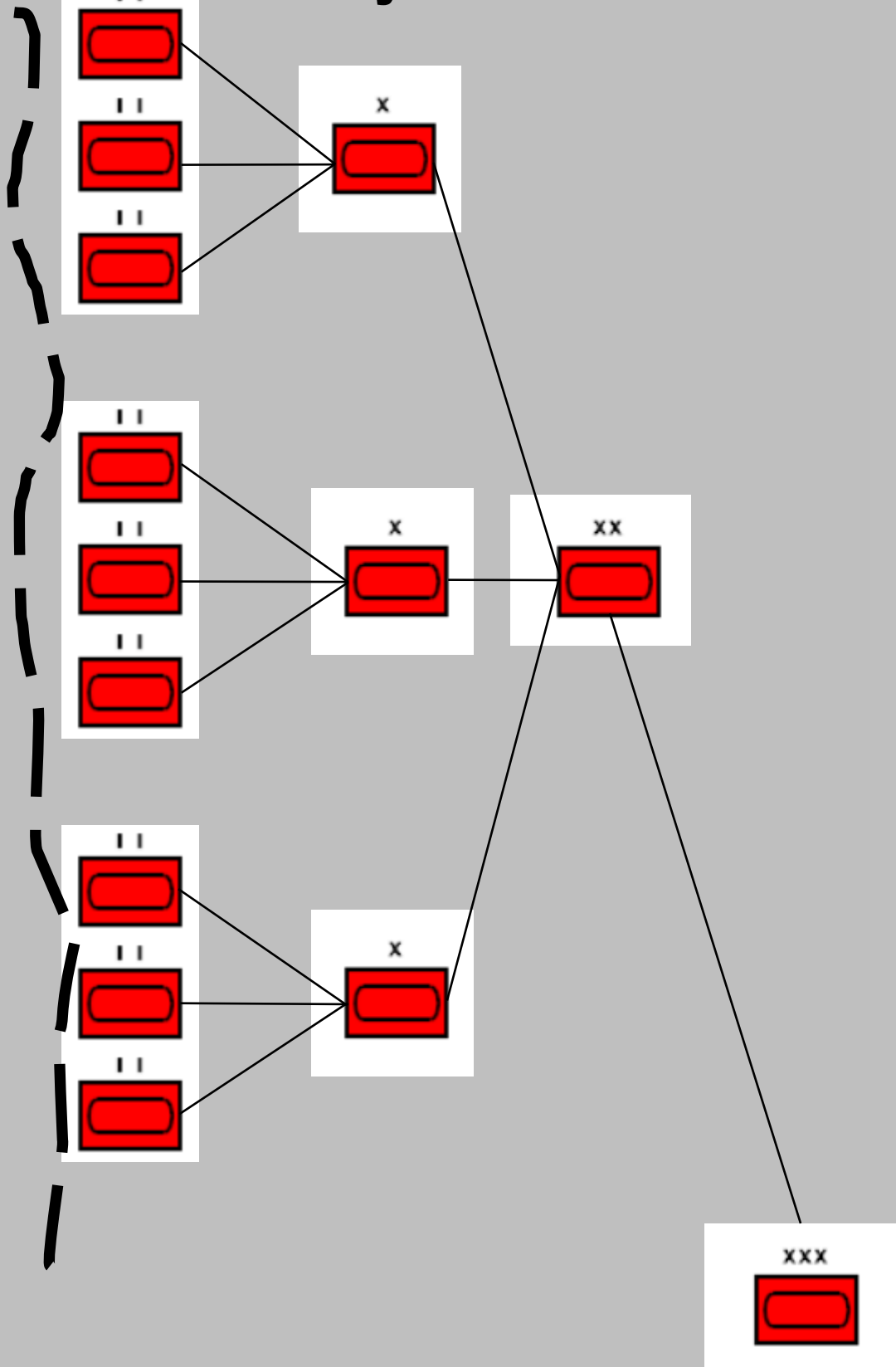
[Back to content](#)

[Back to Corps](#)



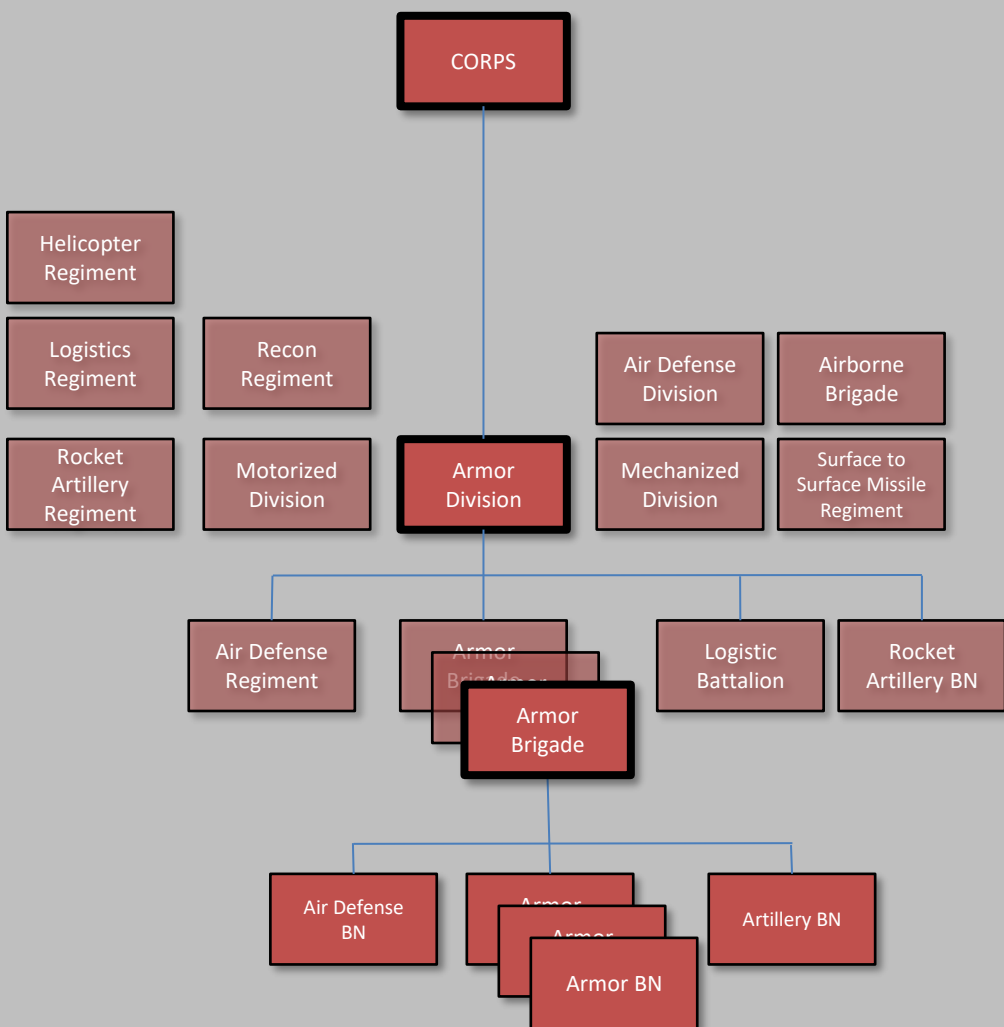
# Same example, with military symbols

FLOT





# Explanation : Hierarchy



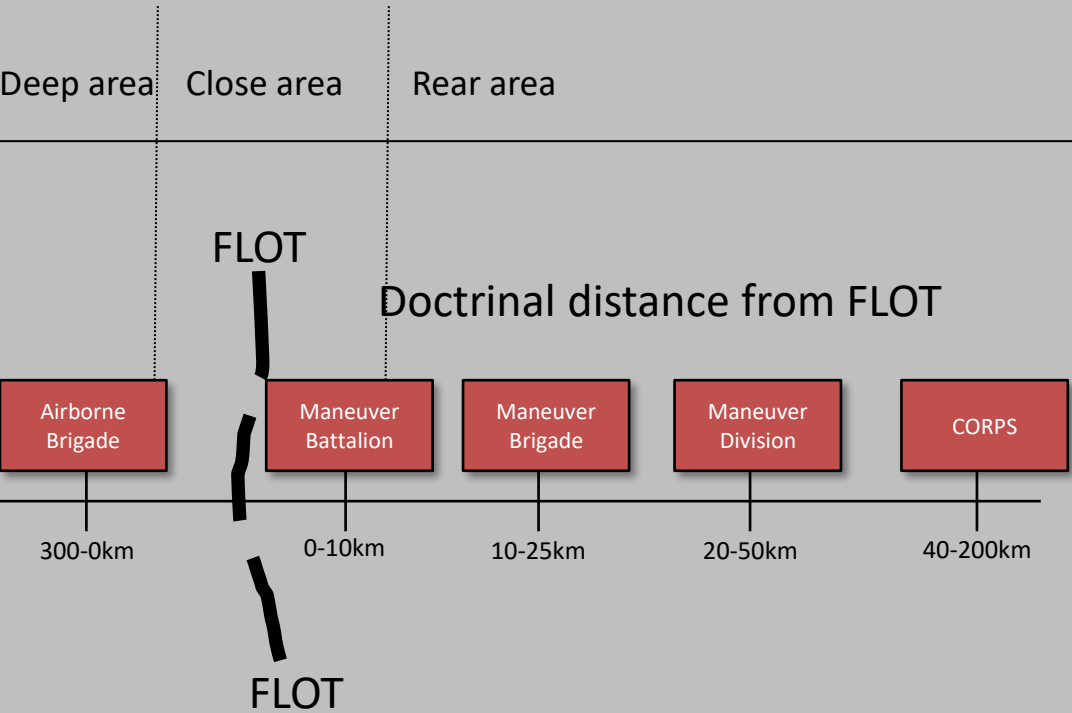
This example focuses on a armor division, which is composed of multiple armor brigades, which in turn consist of multiple armor battalions each.

As the example show, the armor division also consist of a air defense regiment, a logistic battalion and a rocket artillery battalion in addition to the armor brigades. Further down at the brigade level the armor brigade have a air Defense battalion and a artillery battalion in addition to the three armor battalion

BN=Battalion



# Explanation: Distances



## Explanation:

The Forward Line of Own Troops (FLOT) is the battle line between enemy and friendly forces. The maneuver battalions engaged in combat operations are normally in tactical dispositions from 0 to 10 km from the FLOT. The maneuver brigade and brigade resources is normally placed 10-25 km from the FLOT. Further back in the rear area one can find the maneuver division and the division resources. Even further back in the rear area, one will find the Corps and the Corps resources.

Deep area: Behind enemy lines

Close area: Combat zone

Rear area: Within friendly lines

**NOTE:** Airborne Brigade jumping/parachuting in behind enemy lines



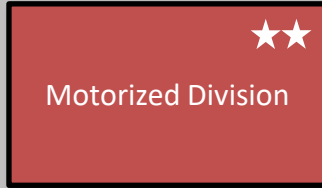
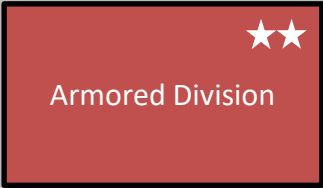
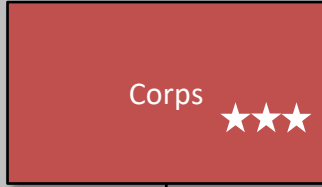
# GROUND FORCES

This section includes information about combat maneuver forces

This section contains generic information about unit sizes and organization



# Corps



**NOTE:** Click on symbol for link

**Back to content**

**Back to Corps**



# Headquarters

The following section contains information about the various headquarters. There are 2 variants of each headquarter level (echelon):

## **Base headquarter**

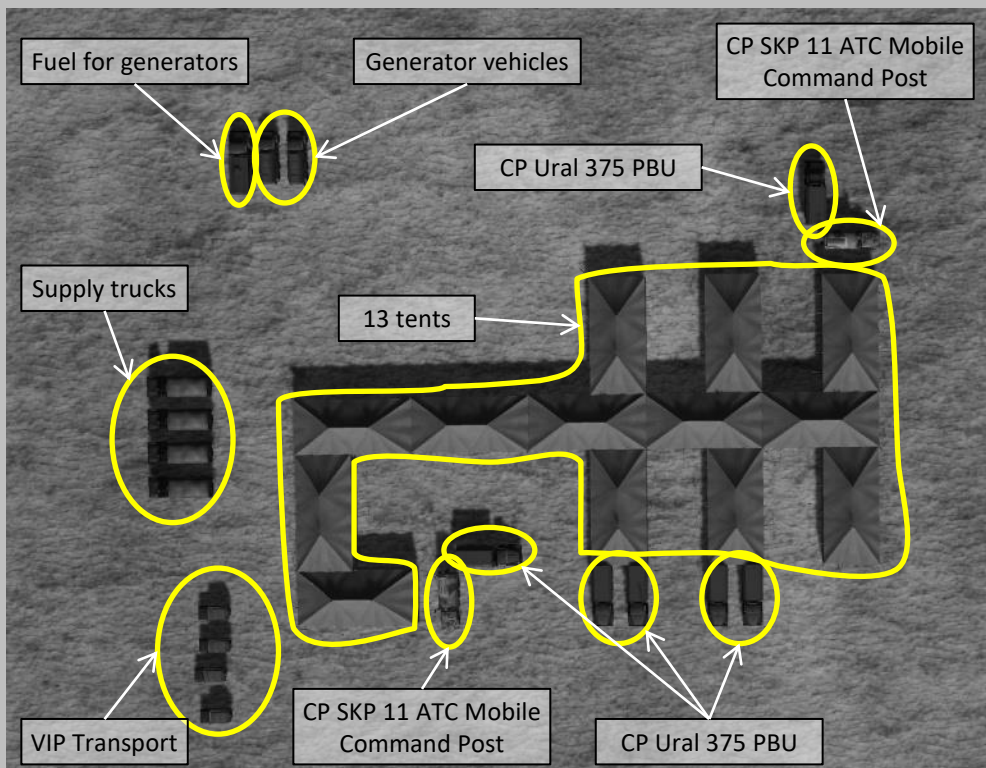
Static headquarter at own territory (homebases). Typically C2 Bunkers or other fixed structures. Each headquarter / base will have a separate layout and given as a specific briefing or report. During force buildup the forces are assigned to their homebases and training areas.

## **Field headquarter**

Mobile headquarters that can move with the force as the ground forces maneuver in combat, consist of vehicles and tents.



# Field Corps HQ



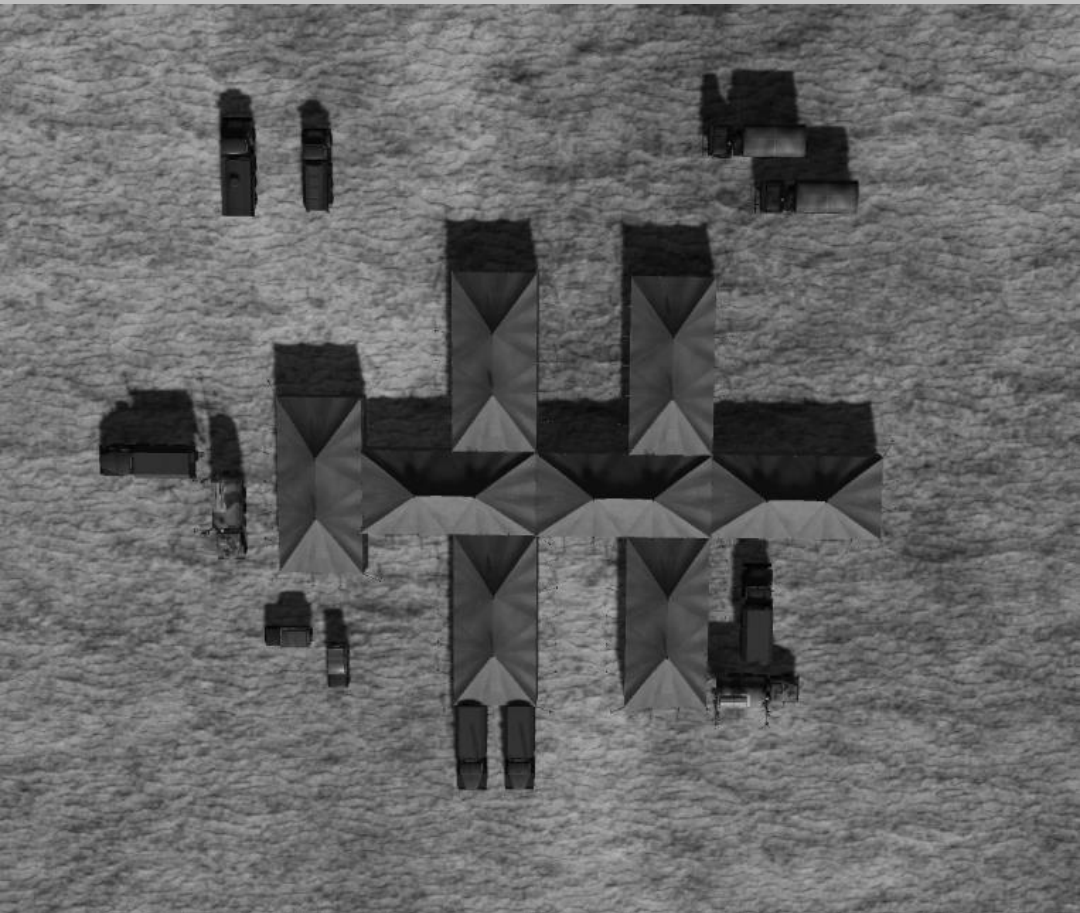
Corps Headquarters (HQ) are located in the rear area and are normally protected by an SA-6 Battalion.

All Corps HQ will have the same tent layout. The amount of vehicles may vary, but as a minimum will include the vehicles in the picture





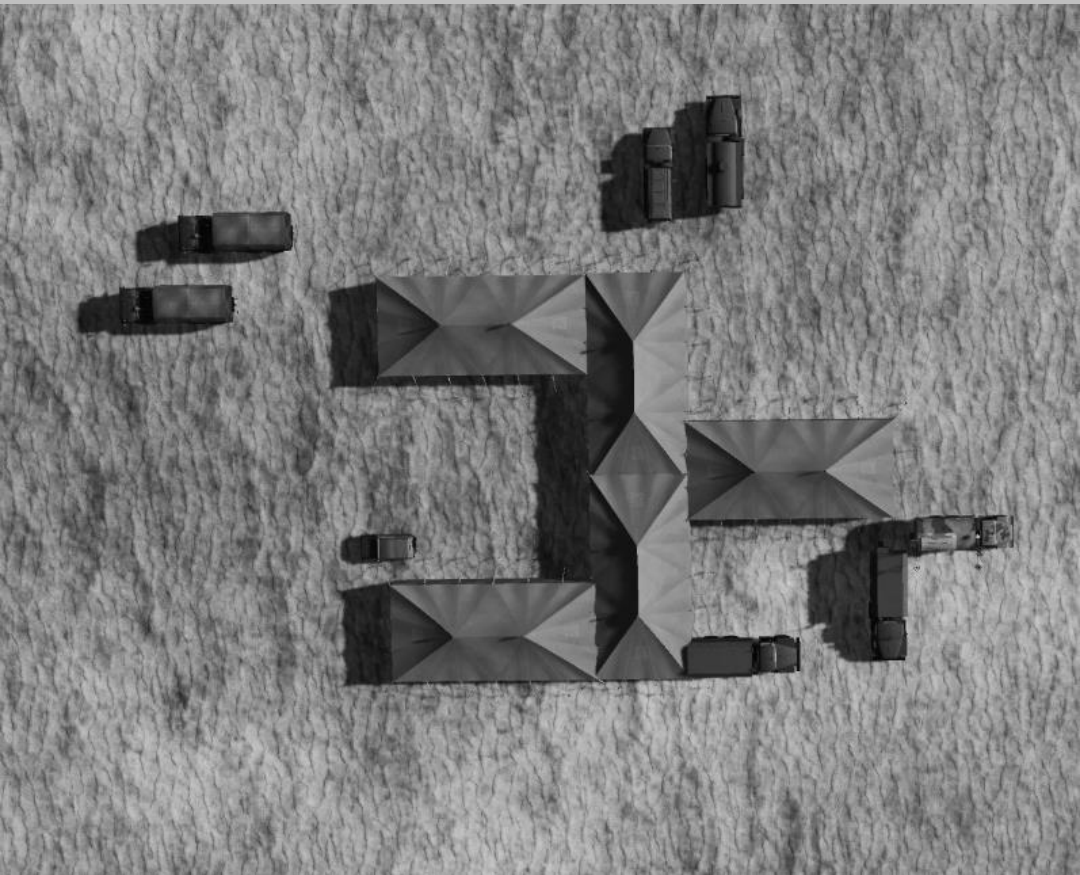
# Field Divison HQ



All Division Headquarters will have the same layout on the tents



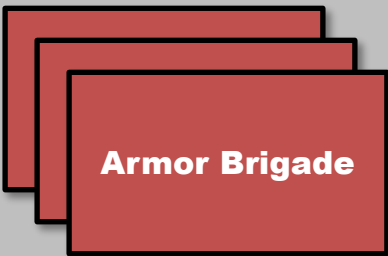
# Field Brigade HQ



All Brigade Headquarters will have the same layout on the tents



# Armor Division



## Armor Division

### 3xMBT Brigades:

243x MBT + 27x fueltrucks + 27x ammo trucks

54x Arty + 27x ammo trucks

### Air Defense Regiment:

36x ZSU-23/4 (or SA19) + 36x SA-19

4x SA-8 + 4x SA-15 + 1x CP Sborka

8xTransport GAZ-66

### Logistical BN:

6x Fueltrucks + 6x Supply trucks + 6x Ammo trucks

### Rocket Arty BN:

4x BM-21 GRAD

2x Transport URAL-4320T

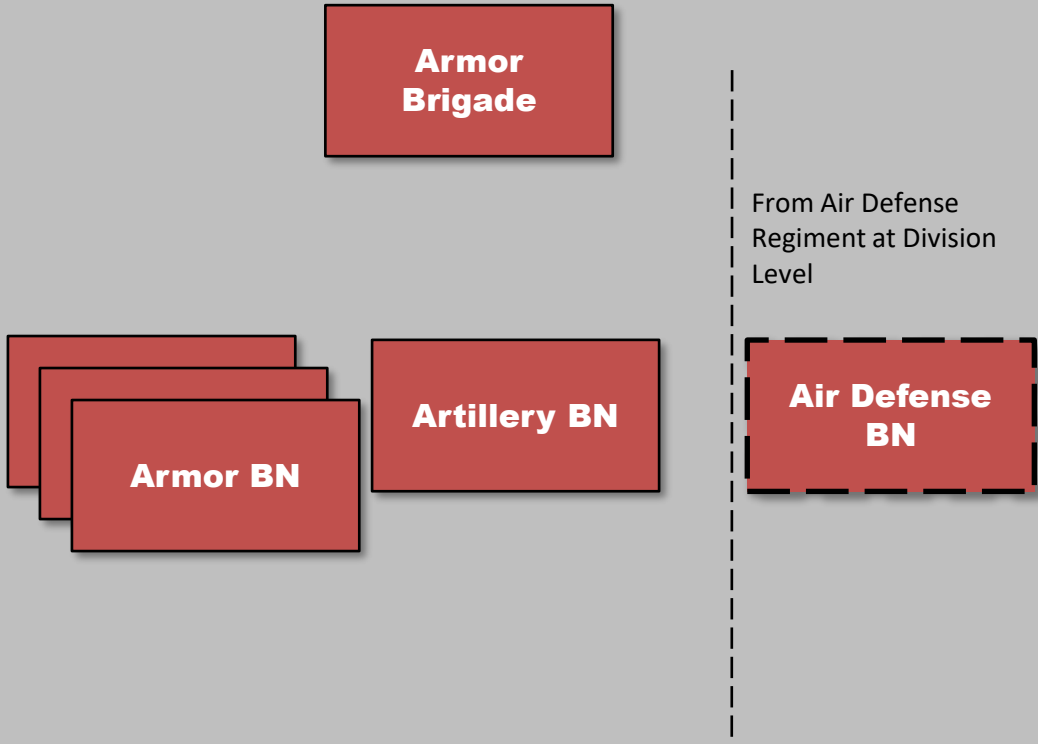
3x CP URAL-375 PBU

[Back to content](#)

[Back to Corps](#)



# Armor Brigade



**Armor Brigade:**

**3xMBT BN :**

81x MBT+9x fueltrucks+9x ammo trucks

**Artillery BN:**

18x Arty + 9x ammo trucks

**Air Defense BN:**

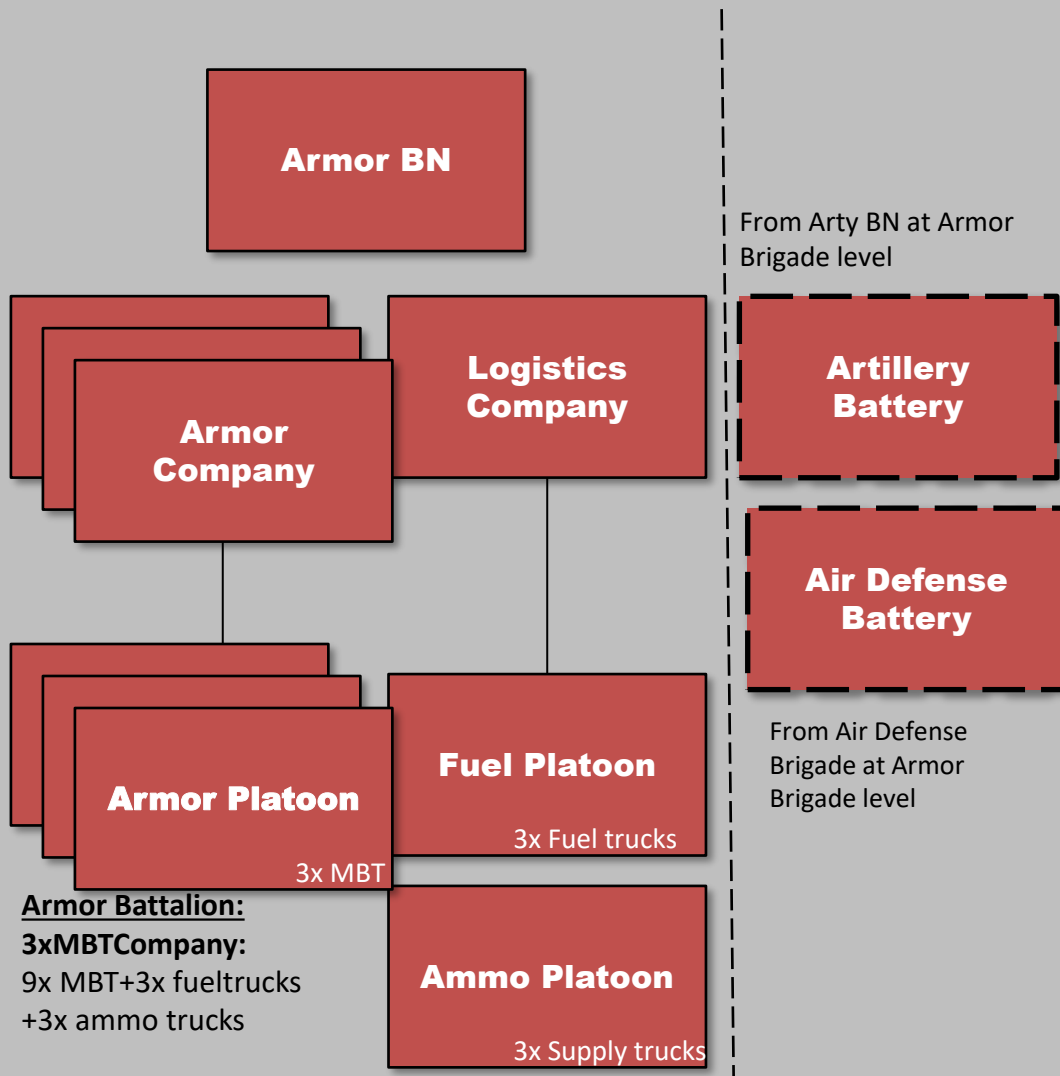
12x ZSU-23/4 (or SA-19)

12x SA-19

6x Transport GAZ-66



# Armor Battalion



**Armor Battalion:**

**3xMBTCompany:**

9x MBT+3x fueltrucks  
+3x ammo trucks

**Artillery Battery:**

6x Arty + 3x ammo trucks

**Air Defense Battery:**

4x ZSU-23/4 (or SA-19)  
4x SA-19  
2x Transport GAZ-66



T72



T80U



T90

[Back to content](#)

[Back to Corps](#)



# Mechanized Division

**Mechanized Div**

**Mechanized  
Brigade**

**Logistics  
Battalion**

**Rocket Artillery  
BN**

**Air Defense  
Regiment**

## Mechanized Division

### **3xMechanized Brigades:**

243x IFV + 27x fueltrucks + 27x ammo trucks

54x Arty + 27x ammo trucks

### **Air Defense Regiment:**

36x ZSU-23/4 (or SA-13) + 36x SA-13

4x SA-8 + 4x SA-15 + 1x CP Sborka

8xTransport GAZ-66

### **Logistical BN:**

6x Fueltruck

6x Supply truck

6x Ammo truck

### **Rocket Arty BN:**

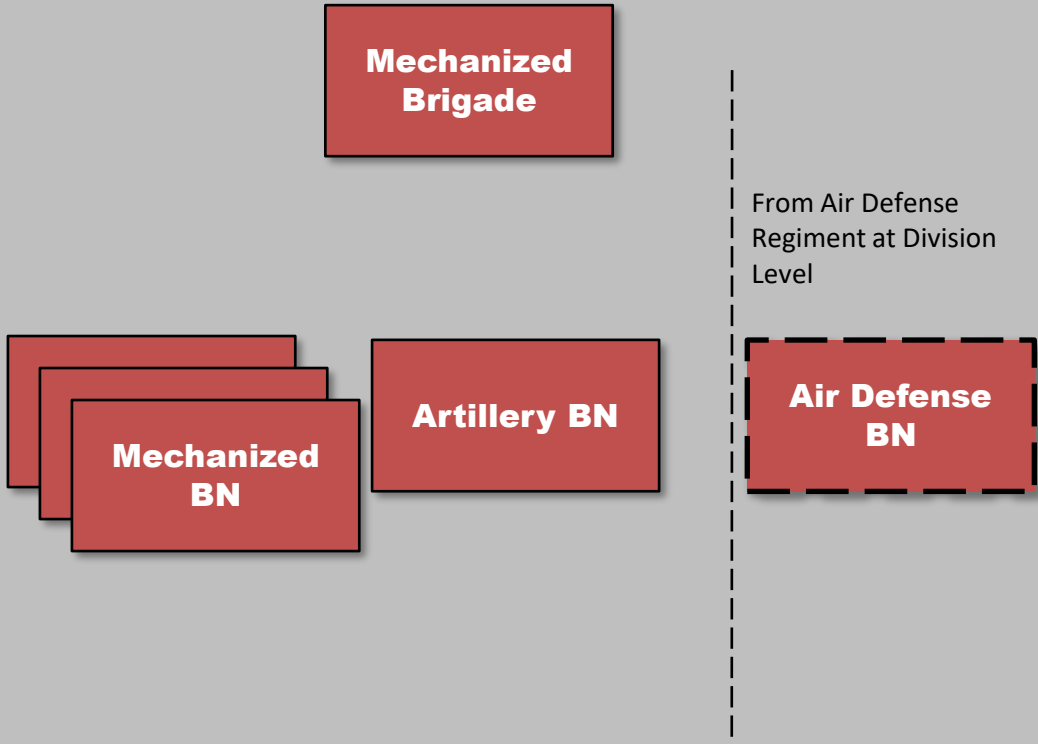
4x BM-21 GRAD

2x Transport URAL-4320T

3x CP URAL-375 PBU



# Mechanized Brigade



**Mechanized Brigade:**

**3xMechanized BN :**

81x IFV+9x fueltrucks+9x ammo trucks

**Artillery BN:**

18x Arty + 9x ammo trucks

**Air Defense BN:**

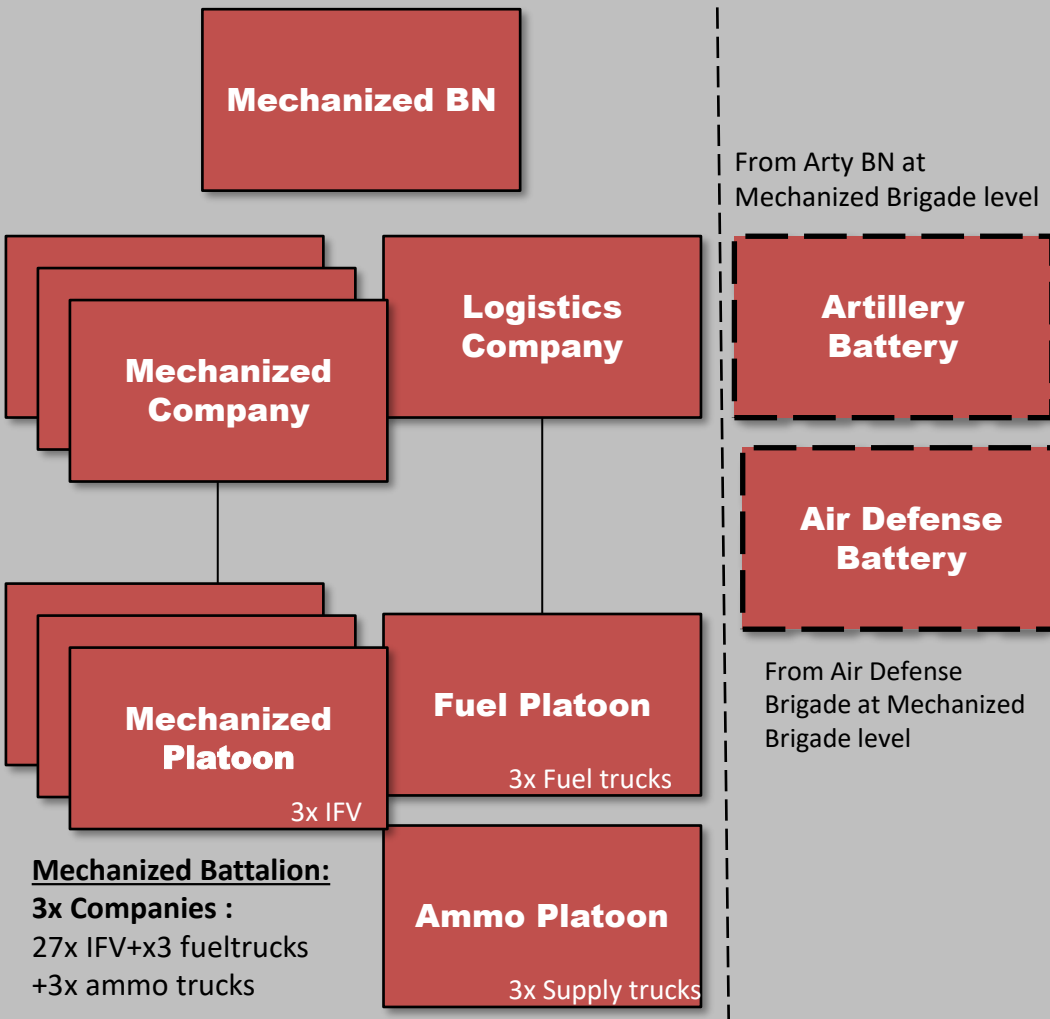
12x ZSU-23/4 (or SA-13)

12x SA-13

6x Transport GAZ-66



# Mechanized BN



**Mechanized Battalion:**

**3x Companies :**

27x IFV+x3 fueltrucks

+3x ammo trucks

**Artillery Battery:**

6x Arty + 3x ammo trucks

**Air Defense Battery:**

4x ZSU-23/4 (or SA-13)

4x SA-13

2x Transport GAZ-66



IFV BMP-1



IFV BMP-2



IFV BMP-3





# Motorized Division

**Motorized Div**

**Motorized  
Brigade**

**Logistics  
Battalion**

**Rocket Artillery  
BN**

**Air Defense  
Regiment**

## **Motorized Division**

### **3xMotorized Brigades:**

243x APC + 27x fueltrucks + 27x ammo trucks

54x Arty + 27x ammo trucks

### **Air Defense Regiment:**

36x ZSU-23/4 (or SA9) + 36x SA-9

4x SA-8 + 4x SA-15 + 1x CP Sborka

8xTransport GAZ-66

### **Logistical BN:**

6x Fueltruck

6x Supply truck

6x Ammo truck

### **Rocket Arty BN:**

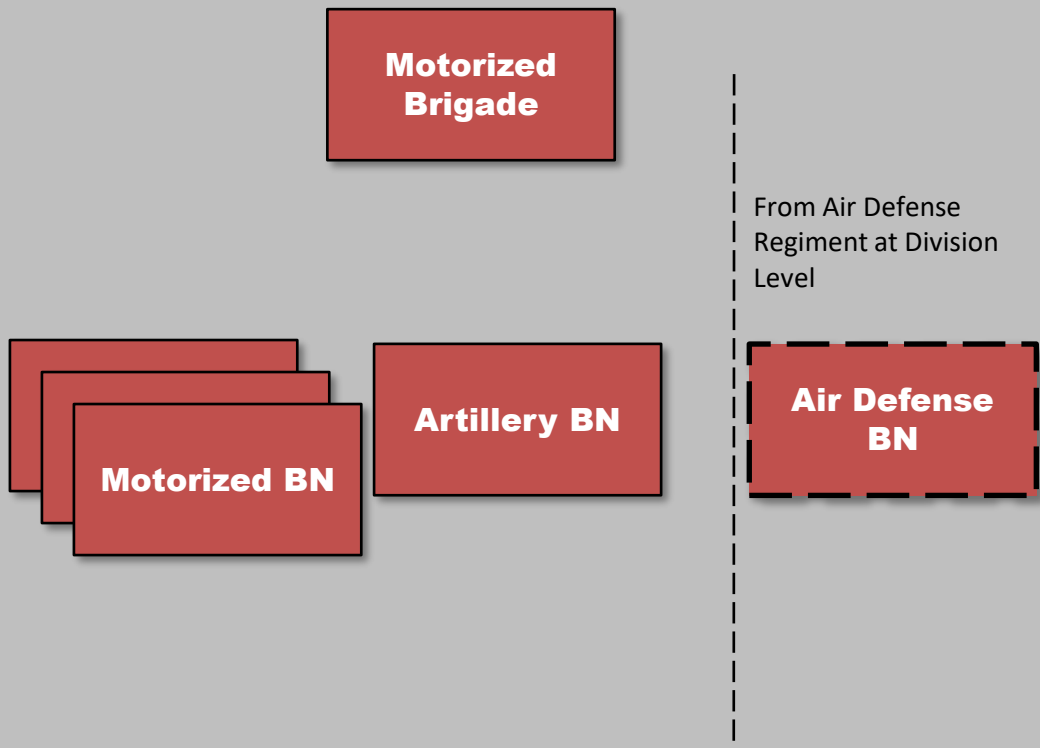
4x BM-21 GRAD

2x Transport URAL-4320T

3x CP URAL-375 PBU



# Motorized Brigade



**Motorized Brigade:**

**3xMotorized BN :**

81x APC +9x fueltrucks+9x ammo trucks

**Artillery BN:**

18x Arty + 9x ammo trucks

**Air Defense BN:**

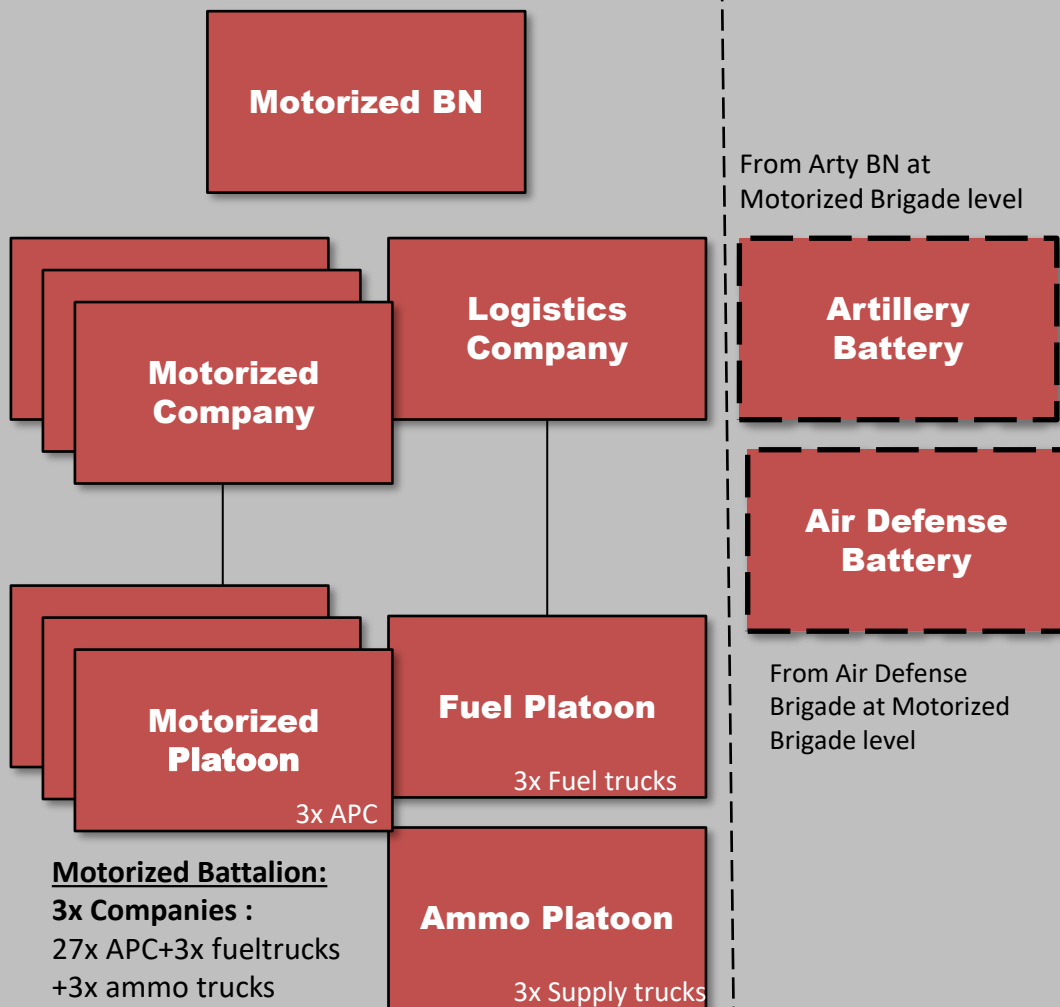
12x ZSU-23/4 (or SA-9)

12x SA-9

6x Transport GAZ-66



# Motorized Battalion



**Motorized Battalion:**

**3x Companies :**

27x APC+3x fueltrucks  
+3x ammo trucks

**Artillery Battery:**

6x Arty + 3x ammo trucks

**Air Defense Battery:**

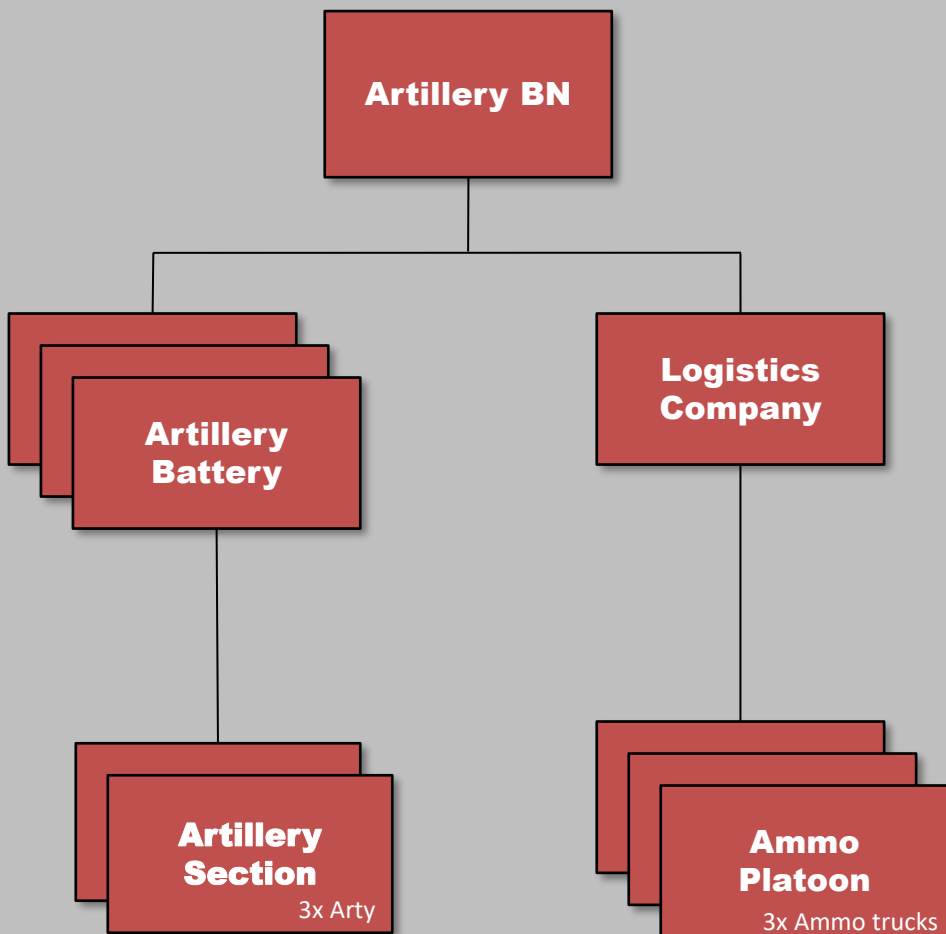
4x ZSU-23/4 (or SA-9)  
4x SA-9  
2x Transport GAZ-66



BTR-80



# Artillery Battalion



SPH 2S19 Msta



SPH 2S3 Akatsia



SPH 2S1  
Gvozika



Transport URAL-4320-31 Armored



# Surface-to-Surface Missile Regiment

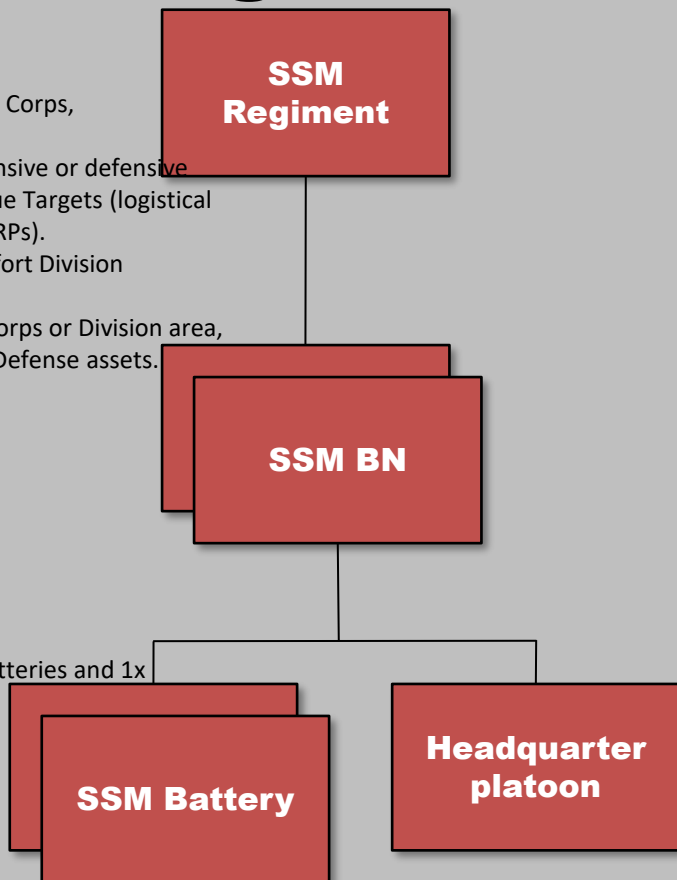
- The SSM Regiment supports the Corps, and is a Corps high value target.
- SSM Regiment will support offensive or defensive operations by attacking High Value Targets (logistical sites / headquartes /airfields /FARPs).
- May be assigned to the Main Effort Division (offensive/defensive).
- Will normally be placed in the Corps or Division area, protected by Corps/ Division Air Defense assets.

**TOTAL:**

- 8x SCUDs
- 4x Transport URAL-4320T
- 6x CP URAL-375 PBU
- 8x Fuel truck ATZ-10

The regiment consists of:

- 2x Battalions
- Each battalion have 2x Missile batteries and 1x headquarter platoon.



SSM Battery:  
 2x TEL (launcher vehicles) per battery  
 + 1x Transport URAL-4320T (Warhead)  
 +2x Fuel truck (rocket fuel) ATZ-10

Headquarter platoon  
 3x CP URAL-375 PBU



SCUD B Launcher (TEL)



Transport URAL-4320T



CP URAL-375 PBU



Fuel Truck ATZ-10

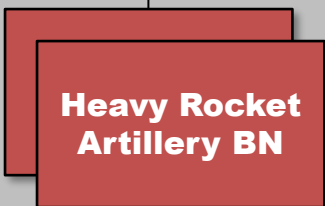


# Rocket Artillery Regiment

The Rocket Artillery Regiment supports the Corps, and is a high value target.

**TOTAL:**  
4x SMERCH TEL  
4x URAGAN TEL  
4x Transport URAL-4320T  
6x CP URAL-375 PBU

The regiment consists of:  
2x Heavy rocket artillery Battalions  
Each battalion have 2x MLRS batteries and 1x headquarter platoon.



2x SMERCH TEL  
1x URAL-4320T

2x URAGAN TEL  
1x URAL-4320T

Headquarter platoon  
3x CP URAL-375 PBU



Transport URAL-4320T



MLRS 9A52 SMERCH (TEL)



MLRS 9K57 URAGAN BM-27 (TEL)



CP URAL-375 PBU



# Rocket Artillery BN

**Rocket Artillery BN**

**Rocket Artillery Battery**

2x BM-21 GRAD  
1x URAL-4320T

**Headquarter platoon**

Headquarter platoon  
3x CP URAL-375 PBU

The Rocket Artillery BN supports a maneuver division, and is a division high value target. Will normally support an offensive, and will be forward deployed to the brigade in the offense during the offensive or start of the offensive. Will normally attack assembly areas, high value targets (logisitcs and C2) or BN frontline sized units. In defensive, it will stay back, protected by Division Air Defense Assets, camouflaged.

**TOTAL:**  
4x BM-21 GRAD  
2x Transport URAL-4320T  
3x CP URAL-375 PBU



MLRS BM-21 GRAD



CP URAL-375 PBU



Transport URAL-4320T

**Back to content**

**Back to Corps**



# Air Defense Division

**Air Defense  
Division**

**Air Defense  
Regiment**

**SA-6 BN**

**HQ / C2  
Battalion**

**SA-11 BN**



**CP SKP-11 ATC Mobile  
Command Post**



**CP URAL-375 PBU**



**GPU APA-5D on URAL-  
4320**

Each Air Defense Regiment is attached to the Armored, Motorized and Mechanized Divisions

SA-6 BN and SA-11 BN is used to protect Corps High Value targets (Such as: Headquarter, Logisitcal sites, Missile regiments , Rocket Artillery regiments)

HQ/C2 BN is used to coordinate the effort between all Air Defense Regiments and the independent Battalions.

The HQ/C2 BN makes it possible for the Air Defense Division to use the long range radars in the SA-6 or SA-11 BN to provide targeting data for the Air Defense Regiments.

HQ/C2 BN consist of:

- 1x CP SKP 11 ATC Mobile Command Post (C2)
- 1x CP URAL-375 PBU (Communcation Node)
- 1x GPU APA-5D (Power)





# Air Defense Regiment

**Air Defense Regiment**

**Air Defense Battalion**

**SA-8 BN**

- 4x Launchers
- + Manpads
- + 4x Transport GAZ-66

**SA-15 BN**

- 4x Launchers
- + CP Sborka
- + Manpads
- + 4x Transport GAZ-66

Each Air Defense Battalion is assigned to a Brigade (Armored, Motorized or Mechanized) within the Division the Air Defense Regiment supports. For accurate type and number of the air defense Battalion in question, see under armored, motorized or mechanized Brigade.

SA-8 BN and SA-15 BN support the Division High Value Targets. SA-15 BN may also be used for point Defense .



GAZ-66



SA-15



SA-8



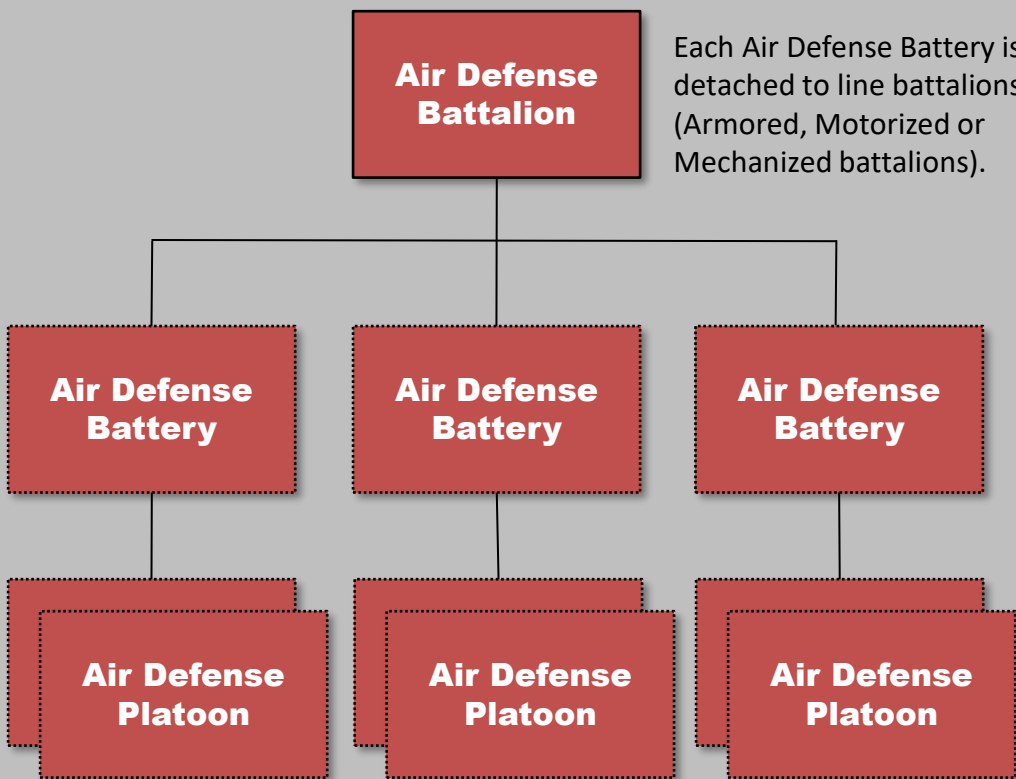
CP Sborka

**Back to content**

**Back to Corps**



# Air Defense Battalion



Each Air Defense Battery is detached to line battalions (Armored, Motorized or Mechanized battalions).

Air Defense Battalion supports Maneuver Brigade  
1x Air Defense Battery supporting a maneuver BN

Air Defense Platoon comes in 6 Different variants depending on the unit they are supporting:

- #1: 1x ZSU23/4 + SA-9 (Motorized) + 1x Transport GAZ-66
- #2: 1x ZSU23/4 + SA-13 (Mechanized) + 1x Transport GAZ-66
- #3: 1x ZSU23/4 +SA-19 (Armor) + 1x Transport GAZ-66
- #4: 1x SA-19+ SA-19 (Armor) + 1x Transport GAZ-66
- #5: 1x SA-13 + SA-13 (Mechanized) + 1x Transport GAZ-66
- #6: 1x SA-9 + SA-9 (Motorized) + 1x Transport GAZ-66



Transport GAZ-66



ZSU 23/4



SA-13



SA-19



SA-9



# Recon Regiment

**Reconnaissance  
Regiment**

**Recon  
Battalion**

**Long Range  
Recon  
Battalion**

**Special Recon  
Battalion**

**Total:**

**3x Recon Battalions:**

- 18x wheeled (1 BN)
- 36x tracked (2x BN)

**1x Long Range BN:**

- Infantry in groups of 4

**1x Special Recon BN:**

- 18x CP URAL 375 PBU



**CP URAL-375 PBU**

1x Recon Battalion per Division, 1x Company per Brigade (used to recon the Brigades main axis of advance)

**Long Range Recon:**

Long range Recon uses RW, plane (parachute) or infiltrates by foot, deep behind enemy lines.

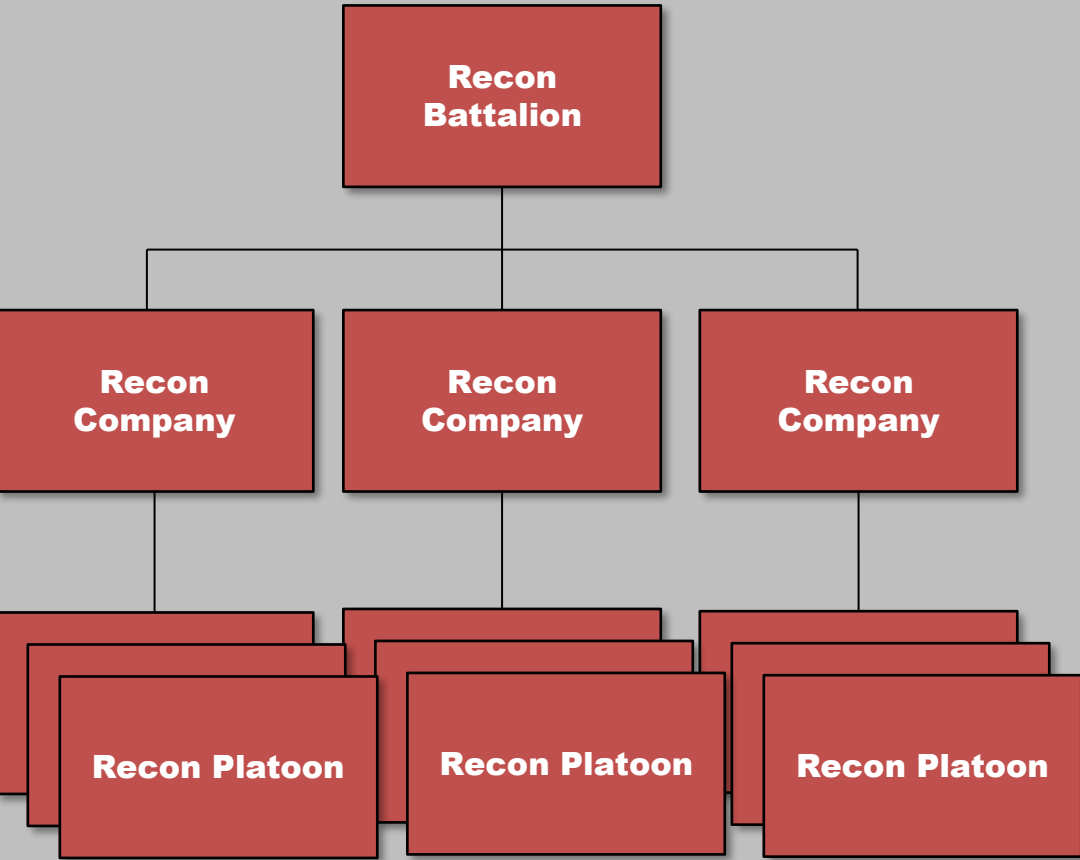
Primary task to locate high value targets, such as logistics, Artillery and C2 of enemy forces or to prepare LZ for the Airborne Brigade.

**Special Recon:**

Uses Electronic warfare, both for jamming, direction finding, and collecting intelligence on enemy forces.

**NOTE:** Recon units due to its nature of collecting intelligence operates close to the FLOT, or on the enemy side of the FLOT.

# Recon BN

**NOTE:**

Recon BN is either tracked or wheeled.

Recon BN supporting Armor or Mechanized forces use ARV-MTLB-U.

Recon BN supporting Motorized company use the ARV BRDM-2

In each platoon there are 2 vehicles

Recon units work together in pairs.



ARV MTLB-U BOMAN



ARV BRDM-2

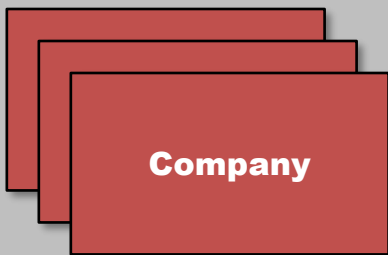
**Total:**

6x Recon Vehicle per company

18x vehicles in the BN



# Special Recon BN



**NOTE:** Special Recon BN only operate in company sized in order to use Electronic Warfare (EW) in a proper way.

Each Company has 6x CP URAL 375 PBU (vehicle identified by the antenna used for EW and Command and Control)

The vehicles always operate in pairs. If 2x CP URAL-375 PBU operating together it is likely part of the Special Recon BN.

Special Recon BN can be used in support of combat forces by collecting intelligence, jamming and direction finding.

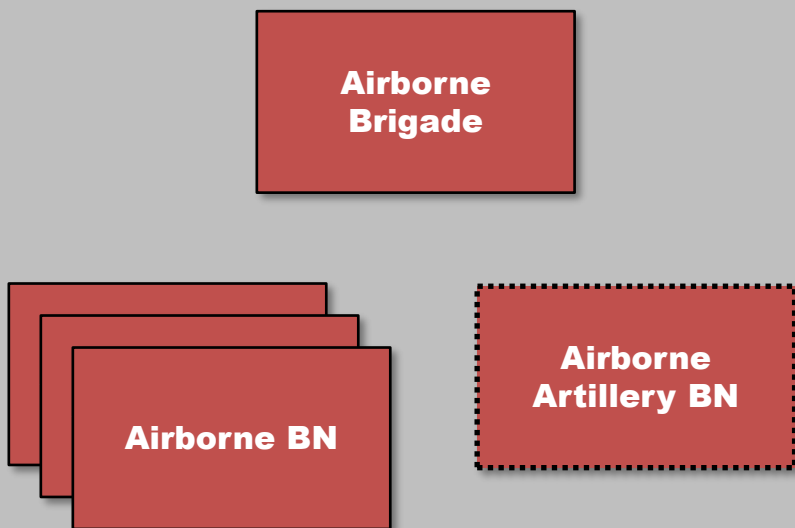
Companies may also be assigned certain areas in the rear where they are doing force protection, for example by jamming various frequencies.



CP URAL-375 PBU



# Airborne Brigade



**TOTAL:**

81x IFV

27x ARV BTR-RD

18x Arty

= 126 vehicles = 42x IL-76 Sorties to move the Airborne Brigade

Inserted via IL-76MD

One IL-76 can carry 3x BMD (1x Airborne Platoon)



IFV BMD-1



ARV BTR-RD



SPH 2S9 NONA

[Back to content](#)

[Back to Corps](#)



# Airborne Battalion

**Airborne Battalion**

**Airborne Company**  
IFV BMD-1

27x vehicles

**Airborne Anti-tank Company**  
ARV BTR-RD

9x vehicles

**Airborne Artillery Company**  
SPH 2S9 NONA

6x vehicles

42 vehicles total = 14x IL-76 to move one Airborne BN

Inserted via IL-76MD

One IL-76 can carry 3x BMD (1 Airborne Platoon)



IFV BMD-1



ARV BTR-RD



SPH 2S9 NONA

**Back to content**

**Back to Corps**



# Helicopter Regiment

**Helicopter Regiment**

**Attack Helicopter Squadron**

**Transport Helicopter Squadron**

**Transport Helicopter Squadron**

Attack Helicopter Squadron (AHS).  
Consist of 6x MI-24.

Attack Helicopter Squadrons are used for CAS mission in support of combat forces, and Armed Reconnaissance further behind the enemy FLOT.

Transport Helicopter Squadron (THS).  
Consist of 6x MI-26 or MI-8.

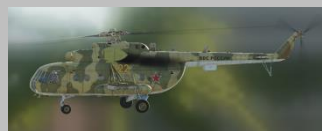
Transport Helicopter Squadrons are used for transport of supplies, medevacs, air assaults, insertion of long range recon forces.



MI-24



MI-26



MI-8





# Logistic Regiment

**Logistic Regiment**

**FARP BN**

**Logistic BN**

**Medical BN**

2x FARPs

- Per FARP:
- 1x CP SKP-11 ATC Mobile Command Post (C2)
  - Transport URAL 375 (ammo)
  - GPU APA-80 on ZiL-131
  - Fuel Truck ATMZ-5

Large supply point in the rear. Transfer to frontline Divisions.

- Ammo
- Fuel
- Food



**Fuel Truck ATMZ-5**



**Transport KAMAZ 43101**



**Transport URAL-375**



**CP SKP-11 ATC Mobile Command Post**

Specific vehicles: (same throughout all echelons)

Ammo: URAL-375

Fuel: Fuel Truck ATMZ-5

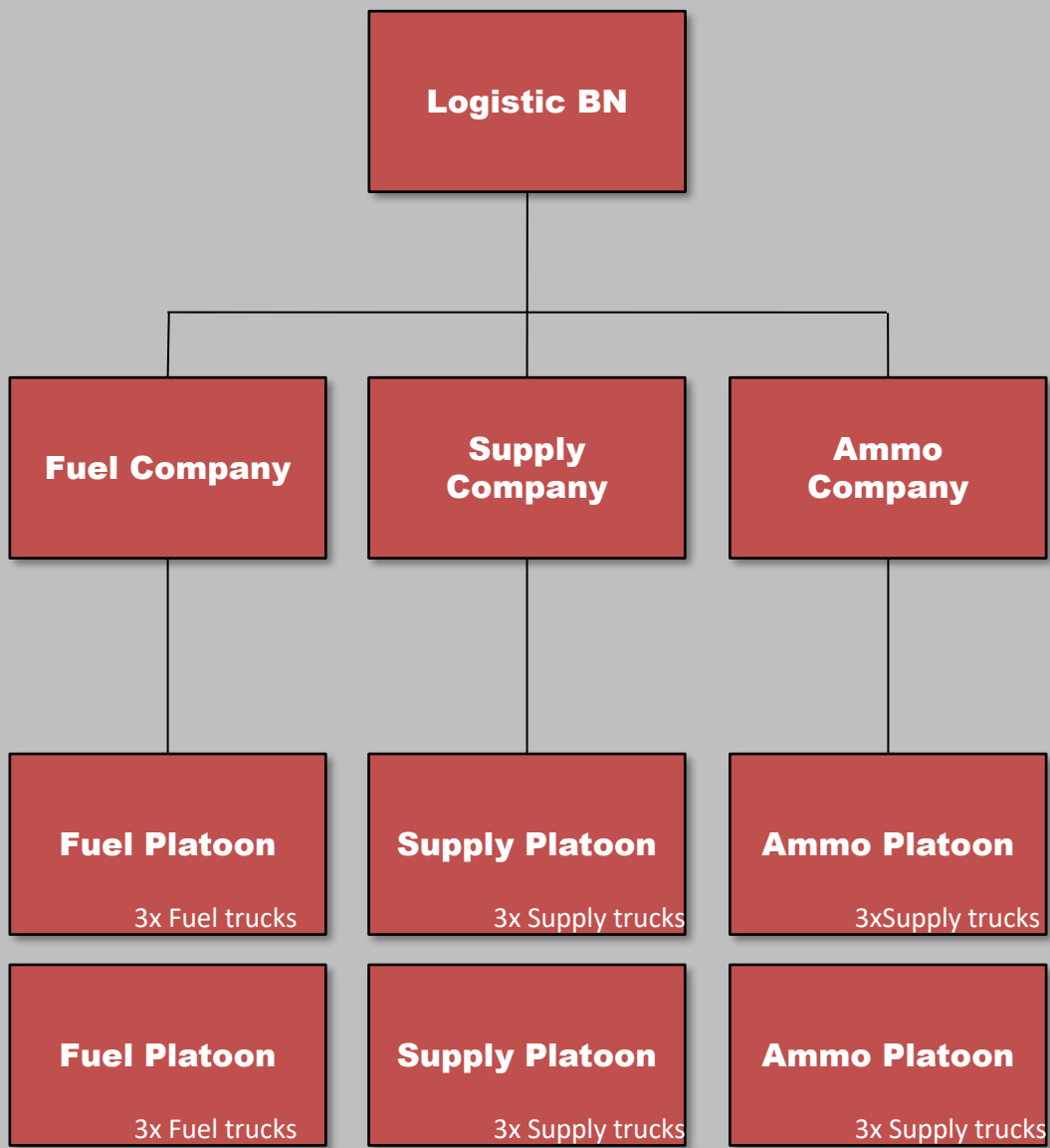
Food: KAMAZ 43101



**GPU APA-80 on ZiL-131**



# Logistic Battalion



Fuel Truck ATMZ-5



Transport KAMAZ 43101



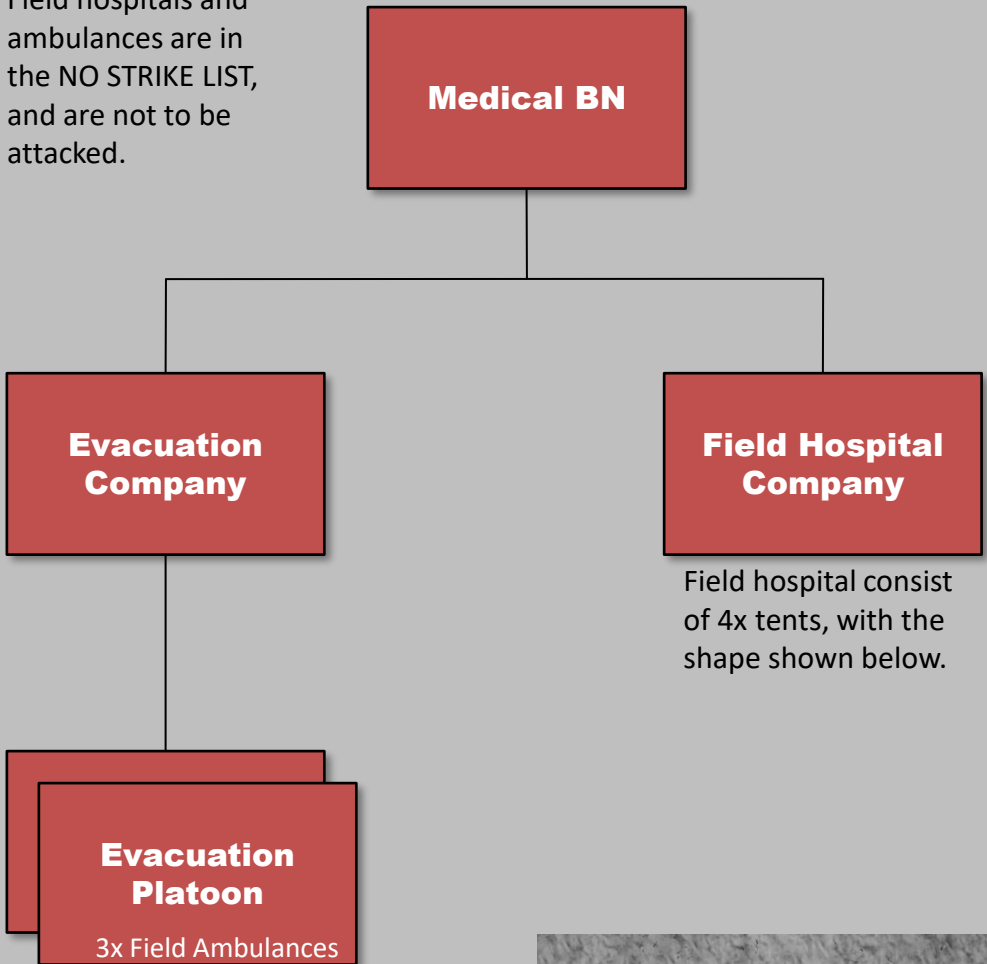
Transport URAL-375



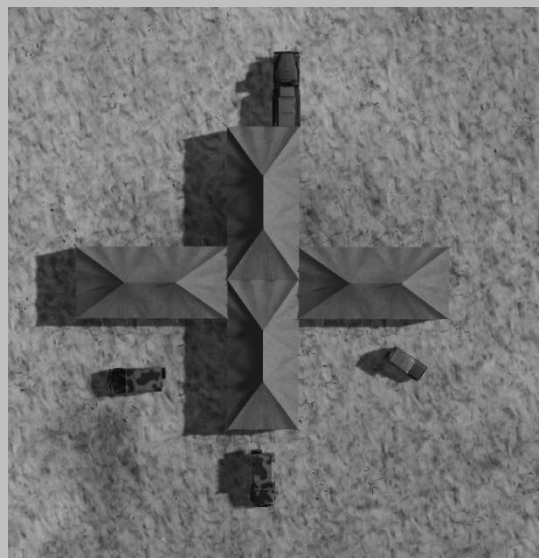
# Medical Battalion

**NOTE:**

Field hospitals and ambulances are in the NO STRIKE LIST, and are not to be attacked.



Field hospital consist of 4x tents, with the shape shown below.



APC TIGR  
233036



# VIP General Escort

When generals are moving around on the battlefield, they are transported in UAZ-469 vehicles in convoys.

For a 3-star general, the convoy will consist of 2x BTR-80 (one at the front, and one in the rear), one ZSU 23/4, and 6x UAZ-469 vehicles.

For a 2-star general, the convoy will consist of 2x BTR-80 (front and rear guard), 1x ZSU 23/4 and 4x UAZ-469

For a 1-star general, the convoy will consist of 2 x BTR-80 (front and rear guard), 1x ZSU 23/4 and 2x UAZ-469.

Generals typically move back and forth between the various HQ's in order to coordinate or receive mission/tasks. Or visits troops to boost morale.

UAZ-469





# Air Defense Forces (ADF)

This section includes information about the Air Defense Forces protecting critical installations.

Controlled by the Air Force.



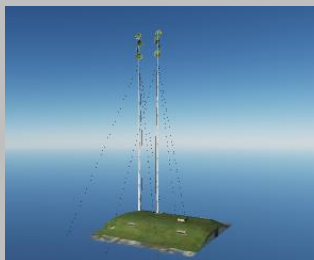
# Air Defense Force Region



Air Defense Force's are organized in regions. Each region is controlled from a centralized Command and Control (C2) centre, located in bunkers. In order to function properly the C2 centre need power. If it is cut from its power supply it will be unable to conduct its function, and the IADS network in the region will not function.



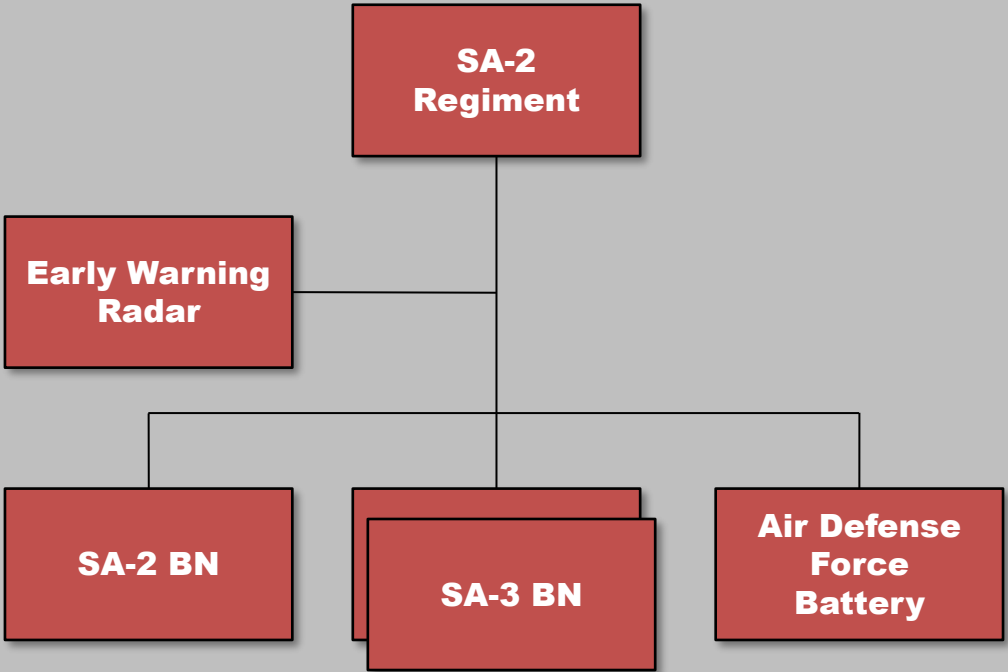
**Powersupply**



**C2 Centre**



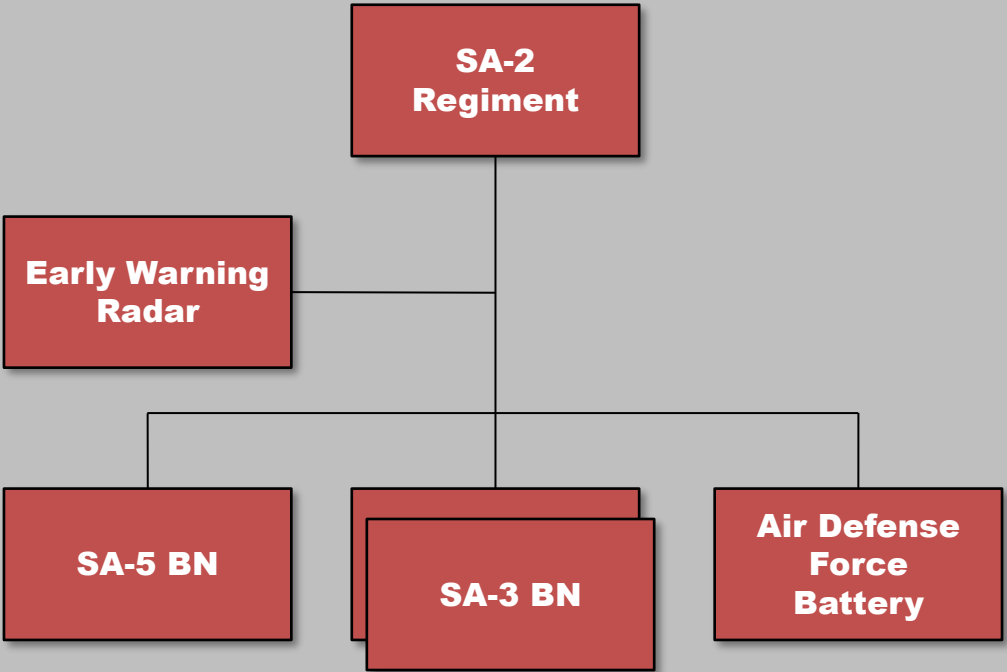
# SA-2 Regiment



The SA-2 Regiment is used to provide area Defense in important areas. The regiment have a Early Warning Radar. The EWR is tied into the region's IADS and provides information to the rest of the IADS. It also contains an SA-2 BN that provides coverage in medium and high altitudes. It also has 2 SA-3 BN's for low and medium altitude coverage in anticipated avenues of approach where low-level flying would make it possible for aircraft to close in on the SA-2. In addition the regiment also has a ADF battery to provide close protection of the SA-2 or SA-3 BN's.



# SA-5 Regiment

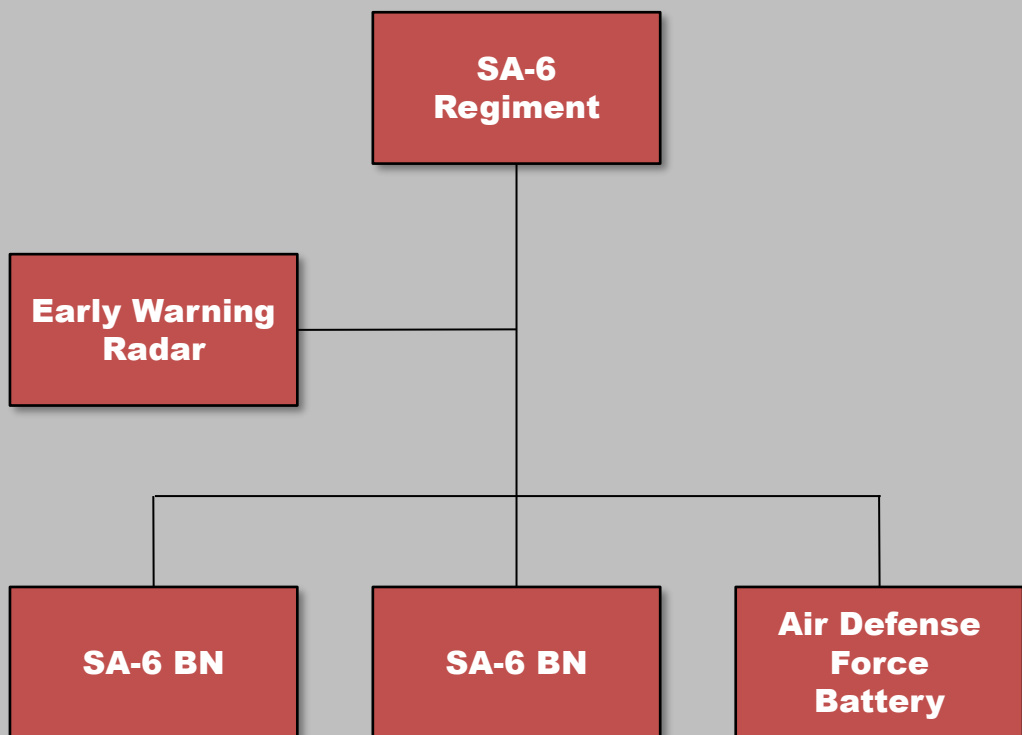


The SA-5 Regiment is used to provide area Defense in important areas. The regiment have a Early Warning Radar. The EWR is tied into the region's IADS and provides information to the rest of the IADS. It also contains an SA-5 BN that provides coverage in medium and high altitudes. It also has 2 SA-3 BN's for low and medium altitude coverage in anticipated avenues of approach where low-level flying would make it possible for aircraft to close in on the SA-5. In addition the regiment also has a ADF battery to provide close protection of the SA-5 or SA-3 BN's.





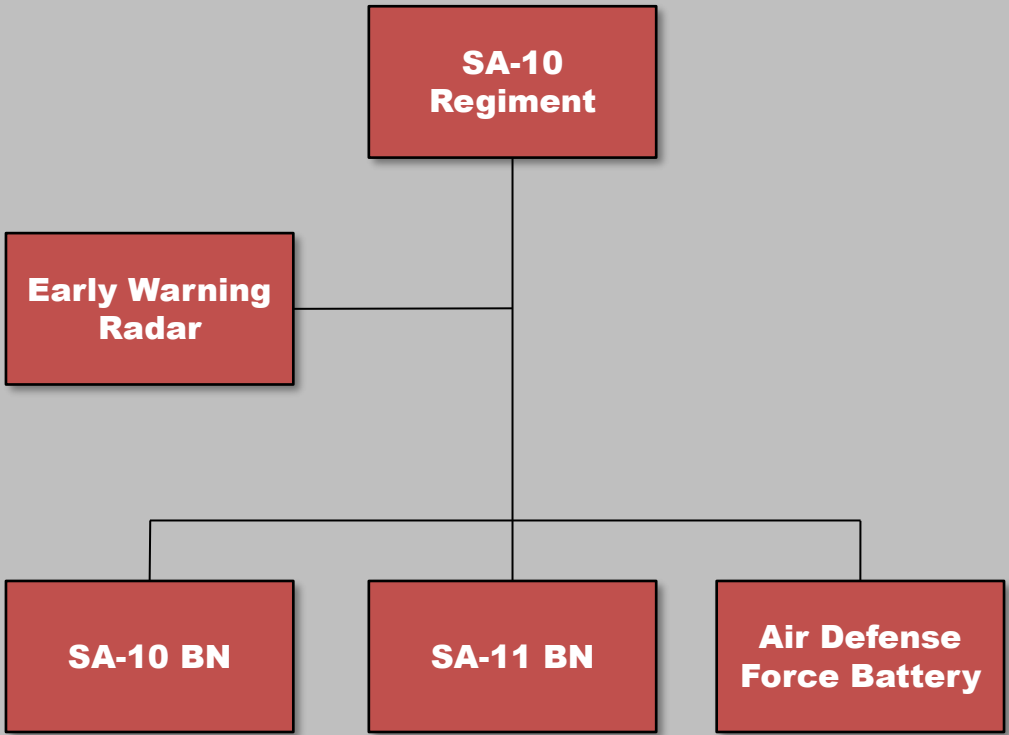
# SA-6 Regiment



The SA-6 Regiment is used to protect important areas. The SA-6 Regiment is highly maneuverable and will use its connection with the IADS to the maximum extent possible by keeping the SAM sites dark and only going active once enemy aircraft are within range. The SA-6 regiment consists of 1 EWR site that is connected to the region IADS. There are 2 SA-6 BNs and a ADF battery providing close protection to the SA-6 BNs.



# SA-10 Regiment



The SA-10 Regiment is used to protect critical and high value targets, such as airfields. The various SAM battalions are maneuverable and will shift positions regularly to avoid enemy detection. The Regiment will use its connection to the IADS and stay dark as much as possible. It will only go active if enemy aircraft are within range. The SA-10 regiment consist of an EWR that is tied into the region's IADS. The main unit is the SA-10 BN that is a high threat to all aircraft operating in its vicinity. An ADF Battery provide close protection.



# SA-10 Battalion

## "GRUMBLE"

**SA-10  
Battalion**

SA-10 Battalions are the key part of a SA-10 regiment, and protect high value targets such as enemy airfields or other critically important targets.

**A SA-10 Battalion consist of:**

- 1x S300 SR "Big Bird" (Search Radar)
- 1x S300 SR "Clam Shell" (Search Radar)
- 1x S300 TR "Flap Lid" (Tracking Radar)
- 1x S300 C2 (Command and control and communication node)
- 4x S300 TEL C (Launcher)
- 4x S300 TEL D (Launcher)
- 2x Transport GAZ-66 (Resupply)



S-300 TR  
Flap Lid



S-300 SR  
Clam Shell



S-300 SR  
Big bird



S-300 C2



S-300 TEL C



S-300 TEL D



Transport GAZ-66



# SA-2 Battalion

## ***"GUIDELINE"***

### SA-2 Battalion

SA-2 Battalions are static sites that do not move often. SA-2 have a long range and are the key element in a SA-2 regiment. SA-2 Battalions normally protect high value targets and are a area Defense SAM.

**A SA-2 Battalion consist of:**

- 1x SA-2 TR "Fan Song" (Tracking radar)
- 1x SR "Flat Face"(Search radar)
- 6x SA-2 LN (Launcher)
- 1x CP URAL-375 PBU (Command and control and communication node)
- 3x Transport GAZ-66 (Resupply)



CP URAL-375 PBU



SA-2 TR Fan  
Song



SR Flat Face



SA-2 LN SM-90



Transport GAZ-66



# SA-3 Battalion

## "GOA"

**SA-3  
Battalion**

SA-3 Battalions are static sites that do not move often. SA-3 Battalions are normally part of SA-2 regiments guarding low altitude avenues of approach that may be a threat to the SA-2 site.

**A SA-3 Battalion consist of:**

- 1x SR "Flat Face" (Search Radar)
- 1x S-125 TR "Low Blow" (Tracking Radar)
- 4x S-125 LN (Launchers)
- 1x CP URAL-375 PBU (Command and Control & Communication node)
- 2x Transport GAZ-66 (Resupply)



CP URAL-375 PBU



SR Flat Face



S-125 Low  
Blow



S-125 LN 5P73



Transport GAZ-66



# SA-5 Battalion

## "GAMMON"

### SA-5 Battalion

SA-5 Battalions are static sites that do not move often. SA-5 have a very long range and are the key element in a SA-5 regiment. SA-5 Battalions normally protect high value targets and are a area Defense SAM.

#### A SA-5 Battalion consist of:

- 1x SA-5 SR "Tin Shield" (Search Radar)
- 1x SA-5 TR "Squire Pair" (Tracking Radar)
- 6x SA-5 Launcher
- 1x CP URAL-375 PBU (Command and control and communication node)
- 3x Transport GAZ-66 (Resupply)



CP URAL-375 PBU



SA-5 SR  
Tin Shield



SA-5 TR  
Square Pair



SA-5 LN



Transport GAZ-66



# SA-6 Battalion

## ***"GAINFUL"***

**SA-6  
Battalion**

SA-6 Battalions are mobile and rarely operate at the same spot for more than a few hours. SA-6 battalions can either support the ground forces as a Corps resource in the Air Defense Division, or support the Air Defense Forces normally organized in SA-6 regiments.

### **A SA-6 Battalion consist of:**

- 1x SA-6 STR **"Straight Flush"** (Search&Track Radar)
- 4x SA-6 LN KUB (Launcher)
- 1x CP URAL 375 PBU (Command and Control & Communication node)
- 2x Transport GAZ-66 (Resupply)



SA-6 STR

**Straight Flush**



SA-6 LN



CP URAL-375 PBU



Transport GAZ-66

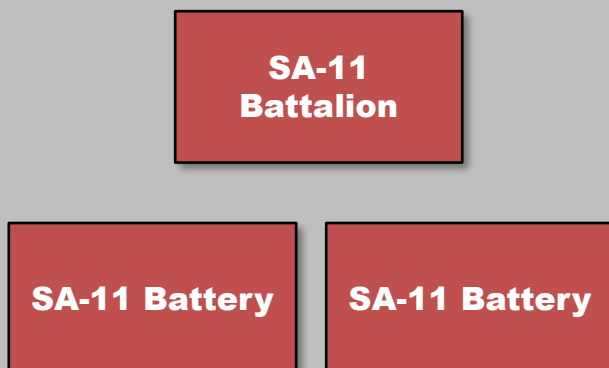
**Back to content**

**Back to Corps**



# SA-11 Battalion

## "GADFLY"



SA-11 battalions consist of 2x SA-11 batteries.

SA-11 battalions can either work independently in support of the ground forces, or can be connected into the Air Defense Forces as battalion or batteries.

A SA-11 battery consist of:

- 1x SA-11 SR "**Snow Drift**" (Search Radar)
- 1x SA-11 CC 9S470M1 (Command and Control)
- 2x SA-11 LN "**Fire Dome**" (Launcher)
- 1x Transport GAZ-66 (Resupply)



SA-11 LN  
Fire Dome



SA-11 CC  
9S470M1



SA-11 SR  
Snow Drift



Transport GAZ-66





# SA-11 Battery

## SA-11 Battery

SA-11 batteries work independently or connected in the IADS.

### SA-11 battery consist of:

- 1x SA-11 SR "Snow Drift" (Search Radar)
- 1x SA-11 CC 9S470M1 (Command and Control)
- 2x SA-11 LN "Fire Dome" (Launcher)
- 1x Transport GAZ-66 (Resupply)



SA-11 LN  
Fire Dome



SA-11 CC  
9S470M1



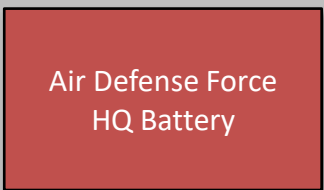
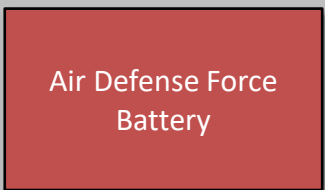
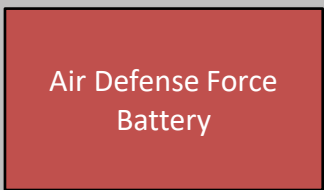
SA-11 SR  
Snow Drift



Transport GAZ-66



# Air Defense Force Battalion



Air Defense Force (ADF) Battalions are used for point Defense of important targets or important avenues of approach. The ADF BN have a command side (HQ battery) with a CP Sboraka that is used as a search radar, and the the command site will give directions and order the ADF batteries and platoons to turn on. This make it harder to locate the individual SAMs as they can stay cold until ordered to be activated.

### The ADF HQ Battery consist of:

- 1x CP-SKP 11 : Command and Control
- 1x CP Sboraka: Search radar
- 1x CP Ural-376 PBU: Communication node
- 1x GPU APA 5-D : Power supply

If these targets hit, the ADF batteries will then either go active and search for targets, or stay dark as they are not aware of the attack.



CP Sboraka



GPU APA-5D on URAL-4320



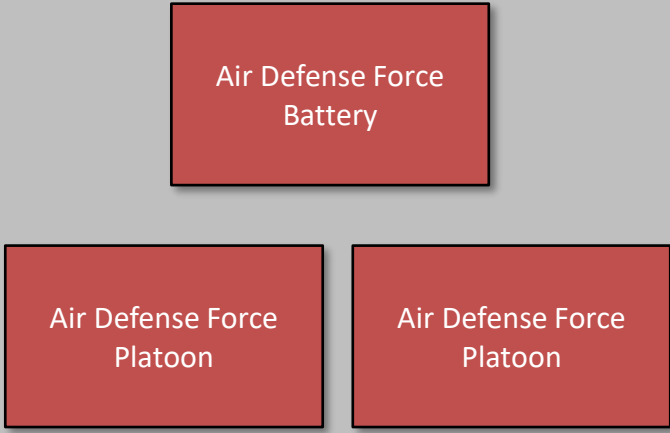
CP URAL-375 PBU



CP SKP-11 ATC Mobile Command Post



# Air Defense Force Battery



One Air Defense Force (ADF) Battery will have 2x ADF platoons. ADF batteries can be used to support bigger SAM systems or be tied together in a ADB BN to protect targets or avenues of approach.

ADF Platoons come in two variants, light and heavy.

**Heavy platoon:**

- 1x SA-15, 1x ZSU-23/4 and 1x Transport GAZ-66

**Light platoon:**

- 2x SA-19 and 1x Transport GAZ-66



SA-15



SA-19



ZSU 23/4



Transport GAZ-66



# Air Defense Force Platoon

Air Defense Force  
Platoon

Air Defense Force (ADF) Platoons come in two variants: light and heavy. Individual ADF Platoons are used for close/point protection of bigger SAM systems.

## Heavy platoon:

- 1x SA-15, 1x ZSU-23/4 and 1x Transport GAZ-66

## Light platoon:

- 2x SA-19 and 1x Transport GAZ-66



SA-15



SA-19



ZSU 23/4



Transport GAZ-66